

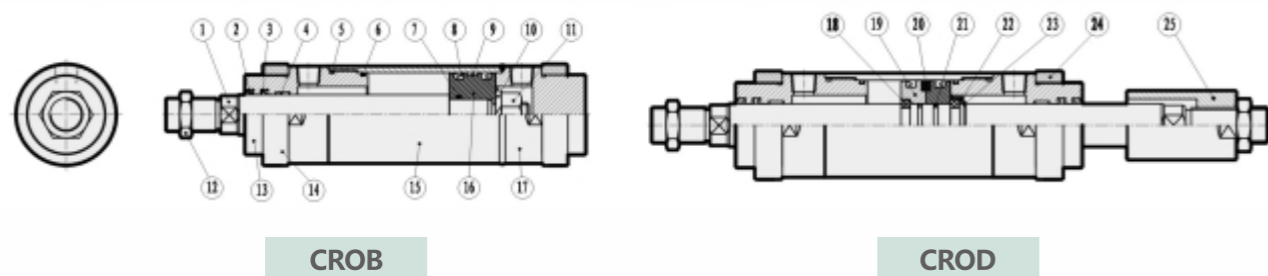
CRO

系列圓型油壓缸

CRO SERIES 14 MPA ROUND HYDRAULIC CYLINDER



圓型油壓缸結構圖 INSIDE STRUCTURE



NO	零件名 Part name	數量 Quantity	NO	零件名 Part name	數量 Quantity	NO	零件名 Part name	數量 Quantity
1	活塞桿 Piston rod	1	10	彈性墊圈 Spring washer	2	18	半卡環 Half snap ring	2
2	防塵油封 Dustproof seal	1	11	螺母 Nut	1	19	銅活塞 Copper piston	1
3	軸用油封 Oil seal for shaft	1	12	軸心螺母 Rod nut	1	20	磁環 Magnet Ring	1
4	導向帶 Guidance tape	1	13	前端蓋 Rod cover	1	21	O型圈 Gasket	1
5	O型環 Gasket	1	14	鎖緊螺母 Lock Nut	1	22	擋環 Baffle Ring	1
6	O型環 Gasket	1	15	缸筒 Cylinder tube	1	23	軸用擋圈 Washer On Shaft	1
7	O型環 Gasket	1	16	活塞 Piston	1	24	鎖緊螺母 Lock Nut	1
8	活塞油封 Piston seal	2	17	後端蓋 End cover	1	25	可調螺母 Adjustable Nut	1
9	耐磨環 Wearing ring	1						

可調緩衝油壓缸特性資料 Specifications

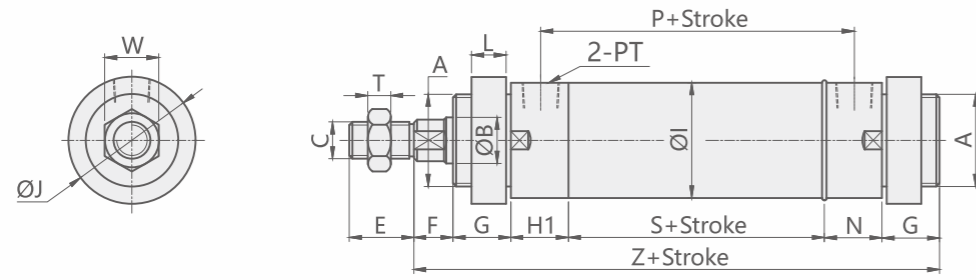
油缸內徑 Hydraulic cylinder inside diameter(mm)	Φ40	Φ50	Φ63	Φ80	Φ100	Φ125
工作流體 Power Fluid	以濾清之標準液壓油 Filtered Oil					
缸管材質 Material of cylinder barrel	碳鋼管 Carbon steel STKM-13c/白鐵管 Stainless tubes SUS 304					
使用壓力範圍 The range of pressure(MPa)	0.3-14 MPA(3-140kg/cm ²)					
使用速度範圍 The range of speed (mm/sec)	8~300(mm/sec)					
使用溫度範圍 Range of temperature(°C)	-10 ~ + 60 (°C)					
標準活塞長度 Length of standard piston (PM)	30	35	35	50	60	70
訂製行程於1501-2500mm間活塞長度 (PM) Piston length when the stroke is between 1501-2500 mm	60	70	70	100	100	120
訂製行程於2501-4000mm間活塞長度 (PM) Piston length when the stroke is between 2501-4000 mm	90	100	100	150	180	200

訂購標示法 ORDERING INDICATION

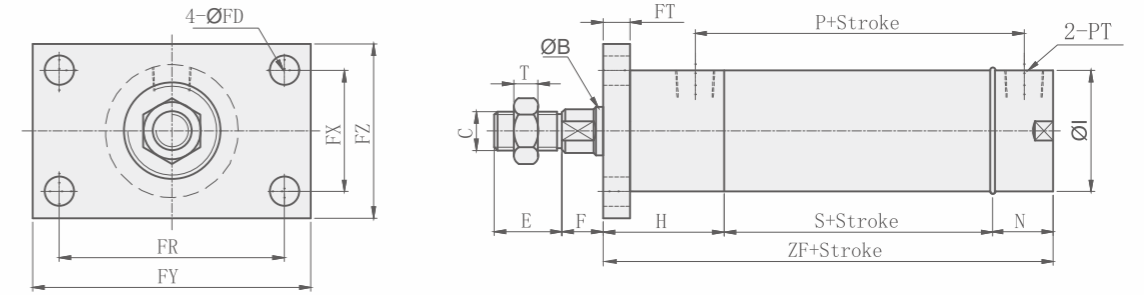
示例: CROB-R-D-63/35-100-LB-Y

CROB	型式 Type	CROA(平尾型) Flat tail type	CROB(B型) B type	CROC(CA型) CA type	CROD(雙軸型) Double rods				
R	磁性感應 Magnetic	無記號: 不附磁石 Blank: No magnet R: 內附磁石 (適用Φ40-Φ100) With magnet			本系列適用Φ40-Φ100 apply to bore Φ40-Φ100				
D	固定緩衝型式 Fixed Cushioning Type	無記號: 無 Blank: No cushion D: 雙側緩衝 cushions on both ends F: 前蓋側緩衝 cushion on head cover B: 後蓋側緩衝 cushion on end cover							
63	油缸內徑 Hydraulic cylinder inside diameter		Φ40	Φ50	Φ63	Φ80	Φ100	Φ125	
35	軸心 Rod	標準 Standard Φ20 最大 Max Φ25 無記號: 標準軸心 Blank: standard rod	Φ25	Φ30	Φ40	Φ50	Φ60	Φ70	Φ80
100	行程 Stroke	鋼管 Steel barrel (Φ40-Φ200) 白鐵管 Iron barrel (Φ40-Φ200)				最大行程: 4米 Max:4m 最大行程: 2.8米 Max:2.8m			
LB	缸體固定型式 Accessories for body	FA 前法蘭型 Front flange type			LA 腳座型 Foot type				
		FB 後法蘭型 Rear flange type			TC 耳軸型 Trunnion type				
Y	軸心固定型式 Accessories for rod	Y 型接頭 Y joint			PHS 魚眼接頭 Rod-eye joint				
		YP Y+Pin Y with pin			T 型接頭 T joint				
		I 型接頭 I joint			H 焊套接頭 Welding sleeve joint				
		KG 浮動接頭 Floating joint			A 可調螺帽 Adjustable nut				

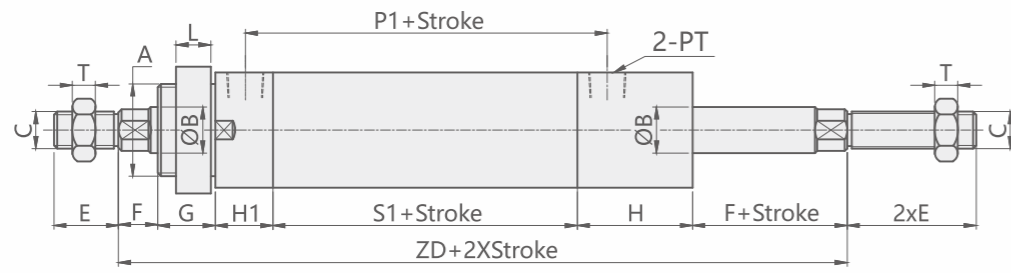
CROB 標準型 CROB STANDARD TYPE



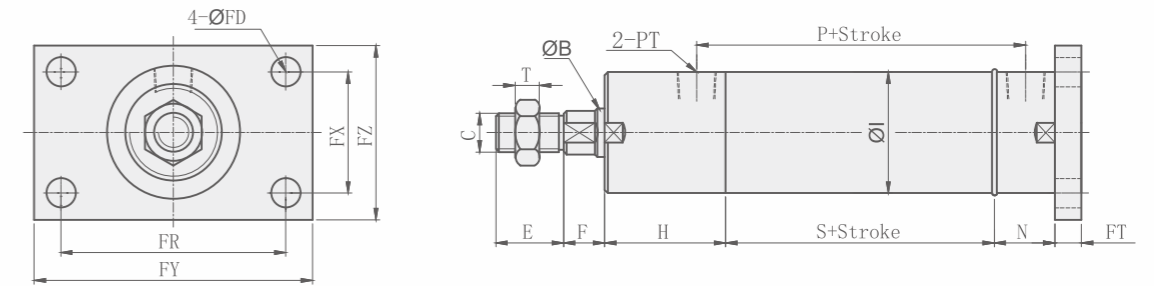
CROA+FA 前法蘭型 CROA+FA FRONT FLANGE TYPE



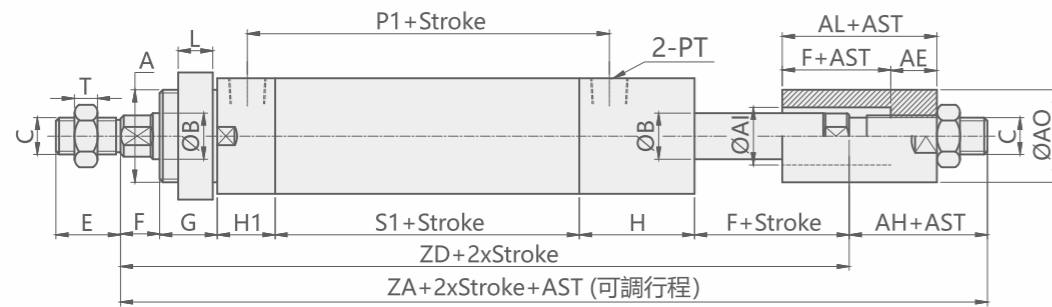
CROD 標準型 CROD STANDARD TYPE



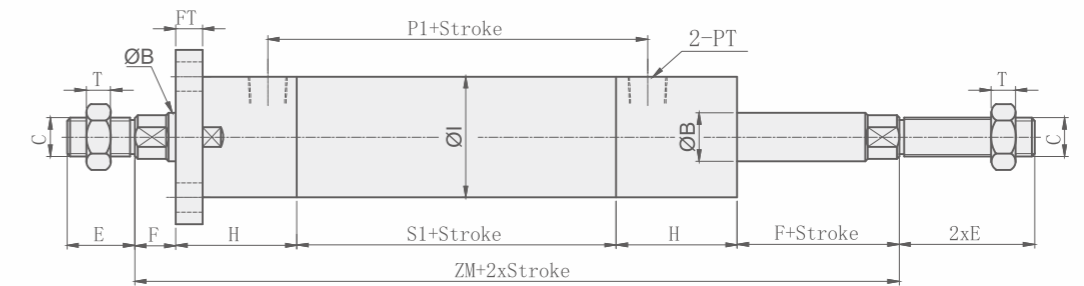
CROB+FB 後法蘭型 CROB+FB REAR FLANGE TYPE



CROD-A 雙軸可調型 CROD-A ADJUSTABLE DOUBLE-END ROD TYPE



CROD+FA 雙軸前法蘭型 CROD+FA DOUBLE END FRONT FLANGE TYPE



Unit:mm

CROB-CROD TYPE																	A(可調行程)TYPE										
BORE	A	ΦB	C	E	F	G	H	H1	ΦI	L	N	ΦJ	P	PT	S	W	T	Z	P1	S1	ZA	ZD	AH	AE	ΦAI	ΦAO	AL
Φ40	M40XP2.0	20	M16XP1.5	28	17	25	50	25	50	15	25	55	86	3/8"	61	23.5	8	178	107	82	246	216	30	20	25	40	37
Φ50	M50XP2.0	25	M22XP1.5	40	20	25	50	25	60	15	30	65	96	3/8"	66	32	13	191	112	87	267	227	40	25	35	50	45
Φ63	M60XP2.0	35	M30XP1.5	45	20	30	50	30	73	20	35	80	105	3/8"	70	41	13	215	125	95	295	255	40	25	45	60	45
Φ80	M70XP2.0	40	M30XP1.5	45	20	30	60	30	95	20	40	90	127.5	1/2"	90	41	13	240	150	120	325	280	45	30	50	70	50
Φ100	M90XP2.0	50	M40XP2.0	55	25	30	60	30	114	20	40	110	147.5	1/2"	110	55	15	265	180	150	365	320	45	30	60	90	55
Φ125	M120XP2.0	60	M50XP2.0	70	30	30	70	40	145	20	50	150	172.5	3/4"	125	65	15	305	210	170	420	370	50	35	70	100	65

注意事項

- 軸心加大或縮小時如未註明長度尺寸時，依照本公司規定自行加工。
- CRO系列行程未超過1499mm時，活塞長度(PM)依據表組裝，行程如超過1500mm以上時，活塞長度(PM)請參閱特性資料表。
- 前蓋螺帽(ΦJ)與軸心螺帽(W)規格大於M50時，其外徑為圓形,W, J 指其外徑。
- AST為客戶指定之可調行程。

NOTE

- For rods extending or reducing processing,if the length is not specified,then it should follow our company's stipulation for processing.
- For the CRO series whose stroke is not exceeding 1499mm,the length of piston conforms to specification table for assembling.For those whose stroke is more than 1500mm,the length of piston conforms to characteristics table.
- The external diameter should be round when the size of rod cover nut (ΦJ) and rod nut (ΦW) is more than M50,W,J refer to its external diameter.
- AST stands for adjustable stroke designated by customers.

Unit:mm

CROA-CROB-CROD TYPE																	FA-FB TYPE				
BORE	ΦB	C	E	F	H	P1	ΦI	N	P	PT	S	T	S1	ZF	ZM	ΦFD	FT	FR	FX	FY	FZ
Φ40	20	M16XP1.5	28	17	50	107	50	25	86	3/8"	61	8	82	136	199	12	11	93	50	115	72
Φ50	25	M22XP1.5	40	20	50	112	60	30	96	3/8"	66	13	87	146	207	14	17	110	56	150	85
Φ63	35	M30XP1.5	45	20	60	125	73	35	105	3/8"	70	13	95	165	235	14	17	126	68	155	95
Φ80	40	M30XP1.5	45	20	60	150	95	40	127.5	1/2"	90	13	120	190	260	18	20	152	75	190	120
Φ100	50	M40XP2.0	55	25	60	180	114	40	147.5	1/2"	110	15	150	210	295	20	20	180	100	220	140
Φ125	60	M50XP2.0	70	30	70	210	145	50	172.5	3/4"	125	15	170	245	340	24	30	222	122	280	170

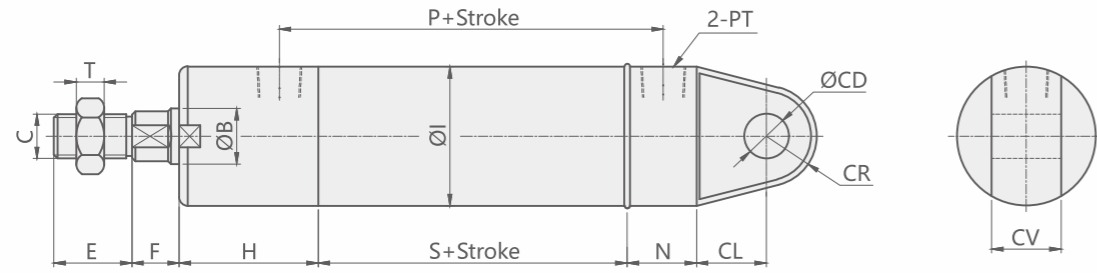
注意事項

- 軸心加大或縮小時如未註明長度尺寸時，依照本公司規定自行加工。
- CRO系列行程未超過1499mm時，活塞長度(PM)依據表組裝，行程如超過1500mm以上時，活塞長度(PM)請參閱特性資料表。
- 前蓋螺帽(ΦJ)與軸心螺帽(W)規格大於M50時，其外徑為圓形,W, J 指其外徑。
- AST為客戶指定之可調行程。

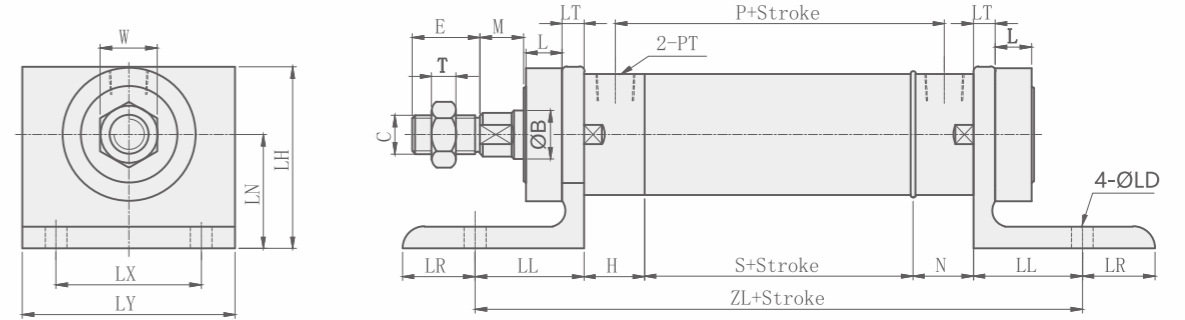
NOTE

- For rods extending or reducing processing,if the length is not specified,then it should follow our company's stipulation for processing.
- For the CRO series whose stroke is not exceeding 1499mm,the length of piston conforms to specification table for assembling.For those whose stroke is more than 1500mm,the length of piston conforms to characteristics table.
- The external diameter should be round when the size of rod cover nut (ΦJ) and rod nut (ΦW) is more than M50,W,J refer to its external diameter.
- AST stands for adjustable stroke designated by customers.

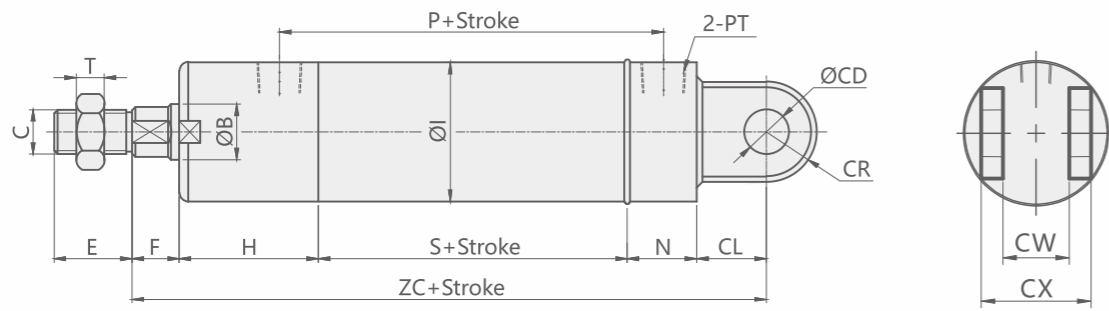
CRO+CA 單耳環型 CRO+CA SINGLE TRUNNION TYPE



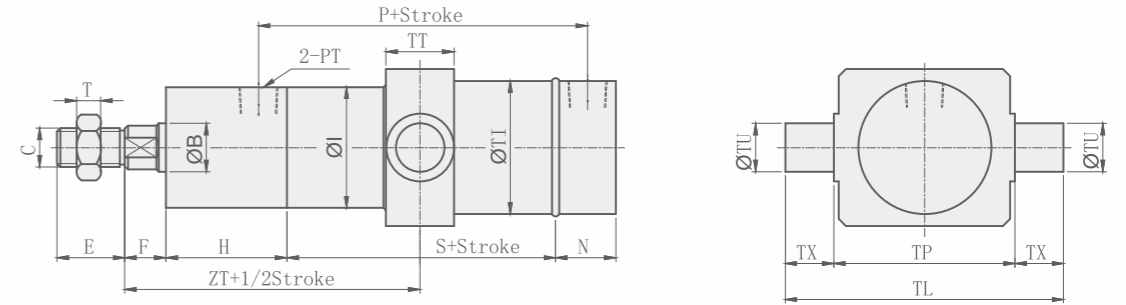
CROB+LB 前後腳座型 CROB+LB FOOT MOUNT TYPE



CRO+CB 雙耳環型 CRO+CB DOUBLE TRUNNION TYPE



CROA+TC 中間耳軸型 CROA+TC MINDDLE TRUNNION TYPE



Unit:mm

CRO TYPE													CA,CB TYPE						
BORE	ΦB	C	E	F	H	ΦI	N	P	PM	PT	S	T	ZC	CW	CL	ΦCD	CR	CV	CX
Φ40	20	M16XP1.5	28	17	50	50	25	88	30	3/8"	61	8	178	26	25	16	18	25	41
Φ50	25	M22XP1.5	40	20	50	60	30	96	35	3/8"	66	13	201	26	35	20	25	25	46
Φ63	35	M30XP1.5	45	20	60	73	35	105	35	3/8"	70	13	230	31	45	25	30	30	56
Φ80	40	M30XP1.5	45	20	60	95	40	127.5	50	1/2"	90	13	260	36	50	30	30	35	66
Φ100	50	M40XP2.0	55	25	60	114	40	147.5	60	1/2"	110	15	295	41	60	35	35	40	81
Φ125	60	M50XP2.0	70	30	70	145	50	172.5	70	3/4"	125	15	345	56	70	50	50	55	106

注意事項

- 1.軸心加大或縮小時如未註明長度尺寸時，依照本公司規定自行加工。
- 2.CRO系列行程未超過1499mm時，活塞長度(PM)依據表組裝，行程如超過1500mm以上時，活塞長度(PM)請參閱特性資料表。
- 3.前蓋螺帽(ΦJ)與軸心螺帽(W)規格大於M50時，其外徑為圓形,W, J 指其外徑。
- 4.AST為客戶指定之可調行程。

NOTE

1. For rods extending or reducing processing,if the length is not specified,then it should follow our company's stipulation for processing.
2. For the CRO series whose stroke is not exceeding 1499mm,the length of piston conforms to specification table for assembling.For those whose stroke is more than 1500mm,the length of piston conforms to characteristics table.
3. The external diameter should be round when the size of rod cover nut (ΦJ) and rod nut (ΦW) is more than M50,W,J refer to its external diameter.
4. AST stands for adjustable stroke designated by customers.

Unit:mm

CROA-CROB TYPE													LB TYPE							TC TYPE										
BORE	ΦB	C	E	M	H	N	L	P	PT	S	T	ZL	ΦLD	LH	LN	LL	LR	LT	LX	LY	ZT	F	H	ΦI	ΦPI	ΦTU	TL	TP	TT	TX
Φ40	20	M16XP1.5	28	18	25	25	15	86	3/8"	61	8	201	12	75	47	45	30	9	60	88	97.5	17	50	50	55	20	115	75	28	20
Φ50	25	M22XP1.5	40	18	25	30	15	96	3/8"	66	13	231	14	88	57	55	33	9	70	100	103	20	50	60	65	25	140	90	33	25
Φ63	35	M30XP1.5	45	17	30	35	20	105	3/8"	70	13	271	16	101	63	68	33	13	70	124	115	20	60	76	83	32	166	102	40	32
Φ80	40	M30XP1.5	45	17	30	40	20	127.5	1/2"	90	13	296	18	101	60	68	33	13	80	140	125	20	60	95	102	32	184	120	43	32
Φ100	50	M40XP2.0	55	20	30	40	20	147.5	1/2"	110	15	320	28	140	80	70	35	15	90	144	140	25	60	114	120	40	220	140	53	40
Φ125	60	M50XP2.0	70	25	40	50	20	172.5	3/4"	125	15	375	22	190	110	80	40	20	120	160	162.5	30	70	145	150	50	275	175	58	50

注意事項

- 1.軸心加大或縮小時如未註明長度尺寸時，依照本公司規定自行加工。
- 2.CRO系列行程未超過1499mm時，活塞長度(PM)依據表組裝，行程如超過1500mm以上時，活塞長度(PM)請參閱特性資料表。
- 3.前蓋螺帽(ΦJ)與軸心螺帽(W)規格大於M50時，其外徑為圓形,W, J 指其外徑。
- 4.AST為客戶指定之可調行程。

NOTE

1. For rods extending or reducing processing,if the length is not specified,then it should follow our company's stipulation for processing.
2. For the CRO series whose stroke is not exceeding 1499mm,the length of piston conforms to specification table for assembling.For those whose stroke is more than 1500mm,the length of piston conforms to characteristics table.
3. The external diameter should be round when the size of rod cover nut (ΦJ) and rod nut (ΦW) is more than M50,W,J refer to its external diameter.
4. AST stands for adjustable stroke designated by customers.