

CTC-PD

外螺紋小型油壓單動拉缸

CTC-PD HYDRAULIC THREAD PULL CYLINDER



產品特性

外螺紋小型單動缸採用進口油封及零件，確保品質，使用時漏油量少，高壓夾持中保持長時間不漏油。外螺紋式小型單動缸體積小，使用於夾具上，能在小空間內排列使用。

此型式油缸使用於拉式場合，彈簧頂出，無法用於頂出場合。安裝時儘可能垂直於工作面相，傾斜勿超過10°。

缸體底部需置放一隻鎖緊防漏墊圈。

最大操作壓力：350 kgf/cm²

最小操作壓力：20 kgf/cm²

作動方式：單動式

FEATURES

The Thread-body single acting hydraulic cylinder use imported oil seal and accessories to guarantee the quality. No oil leakage while clamping in high pressure for a long time. The volume of the thread-body single acting hydraulic cylinder is small. It can be utilized in a small space in the fixture. This hydraulic cylinder is used to extend out, and when spring returns, but it can't be used for pulling back.

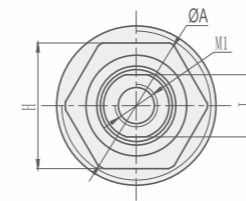
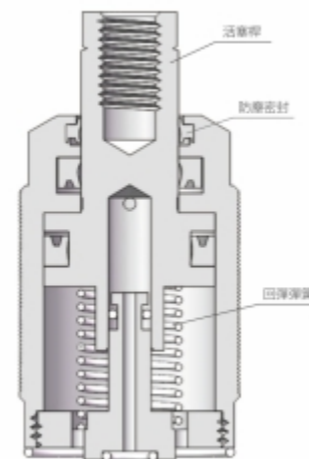
The angle degree between the cylinder and workpiece could not be larger than 10° while installing. The bottom of the cylinder barrel needs a leakage-proof gasket.

Max. operating pressure: 350 kgf/cm²

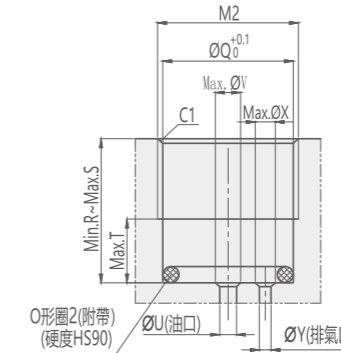
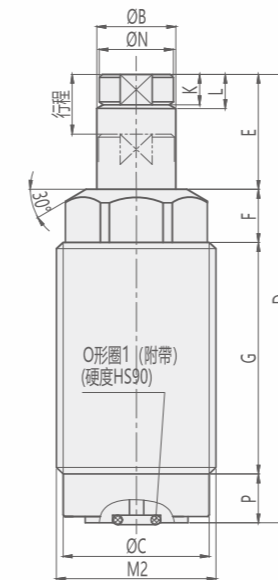
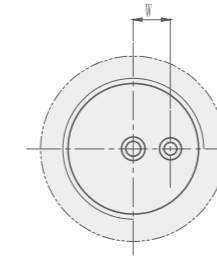
Min. operating pressure: 20 kgf/cm²

Single acting

剖面圖 Sectional view



安裝部位加工尺寸



外形尺寸及安裝部位加工尺寸表
External dimensions and machine dimensions for mounting Unit:mm

MODEL	CTC-PD022	CTC-PD025	CTC-PD030	CTC-PD036	CTC-PD048	CTC-PD058
A	19	21.5	27	33	45	55
B	10	10	12	16	20	25
C	20.3	23.3	28.3	34.3	46.3	56.3
D 行程	5	51	51	-	-	-
	10	65	65	69	73	88
	20	-	-	96	101	109
E 行程	5	10	10	-	-	-
	10	15	15	16	17	20.5
	20	-	-	26	27	30.5
F	7.5	8	9.5	11.5	13.5	16.5
G 行程	5	27	26.5	-	-	-
	10	36	35.5	35.5	35.5	38
	20	-	-	52.5	53.5	54.5
H	17	19	24	30	41	50
J	8	8	10	14	17	22
K	4.5	4.5	5.5	6.5	8.5	10
L	5	5	6	7	9	10.5
M1	M6X1深11	M6X1深11	M8X1.25深18	M10X1.5深20	M12X1.75深22	M16X2深27
M2	M22X1.5	M25X1.5	M30X1.5	M36X1.5	M48X1.5	M58X1.5
N	9.5	9.5	11.5	15.5	19.5	24.5
P	6.5	6.5	8	9	12	13
Q	20.5	23.5	28.5	34.5	46.5	56.5
R	13	14	15	17	20	20
S 行程	5	32.5	32	-	-	-
	10	41.5	41	42.5	43.5	46.5
	20	-	-	59.5	61.5	65.5
T	5.5	5.5	7	8	11	12
U	3	3	3	4	6	6
V	5	5	5	5	7	7
W	7	7.5	9.5	12	15	18
X	4	4	4	4	4	4
Y	3	3	3	3	3	3
O形圈1	P6	P6	P6	P6	P8	P8
O形圈2	AS568-017	AS568-019	AS568-022	AS568-026	AS568-031	AS568-034

訂購標示法 ORDERING INDICATION

示例: CTC-PD022-10

CTC-PD	系列 Series	CTC-PD
022	022/025/030/036/048/058	
10	行程 STROKE	(具體行程見尺寸表) Please refer to the dimension table for the more details



規格參數表 SPECIFICATIONS

型號	理論夾持力 (350 kgf/cm ²)	油缸內徑	總行程	拉入容積	拉入受壓面積	使用溫度範圍	使用流體
MODEL	CLAMPING FORCE AT 350kgf/cm ² (kgf)	HYDRAULIC CYLINDER INSIDE DIAMETER(mm)	TOTAL STROKE(mm)	OIL CAPACITY CLAMP(cm ³)	EFFPISTON AREA CLAMP(cm ²)	RANGE OF TEMPERATURE(°C)	USABLE FLUID
CTC-PD022	296	16	5/10	0.5/0.9	0.84	0~+70°C	相當於ISO黏度等級的ISO-VG-32一般液壓油 Recommended: ISO-VG-32 hydraulic oil equivalent to ISO viscosity grade
CTC-PD025	489	18	5/10	0.7/1.4	1.37	0~+70°C	
CTC-PD030	806	22	10/20	2.3/4.6	2.29	0~+70°C	
CTC-PD036	1326	28	10/20	3.8/7.5	3.76	0~+70°C	
CTC-PD048	2265	36	10/20	6.4/12.8	6.40	0~+70°C	
CTC-PD058	3918	46	10/20	11.1/22.2	11.07	0~+70°C	